

Wayne Window

Fall Edition 2009

Celebrating Wayne's 175th Anniversary

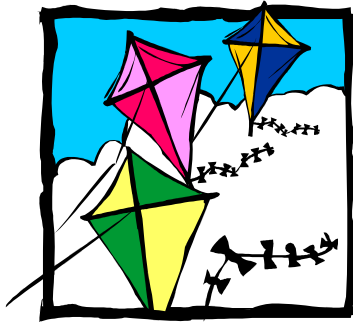
at

Wayne Day

Saturday, October 3rd
(Rain date October 4th)

3PM

Dunham Field



**Bring the whole family, friends and neighbors
for a lovely day in the Wayne Countryside**

Bring a kite or make one there!

Hayride and sing-along

Pig roast, all-beef hot dogs and all the accompaniments

Roasting marshmallows at the Bonfire at dusk

Music provided by Wayne's own Grasslands Quartet



Thanks to our sponsors;

Village of Wayne

Wayne Historic Preservation Society

Wayne Area Conservation Foundation

Abbott Tree Care Professionals

Prestige Nursery Garden Center

Where Do All Those Taxes Go?

By Bill Sheehan, Village Treasurer

As you pay the second installment of this year's property tax bill, you likely wonder where all the money goes. Wayne's share of your annual property tax bill is about 5-6% of the total. The remaining 94%+ goes to fund schools, fire protection, library and other services we all benefit from but which are not furnished by the Village. If your house is worth, say, \$400,000, and your total tax bill is about \$7,500, the Village will receive about \$400 of that total. Wayne will also receive a share of the income tax you pay to Illinois and the utility taxes you pay with your phone, electric and gas bills. But the property taxes we all pay remain the Village's most important revenue source, accounting for almost half of all revenues.

Where will the Village spend your property tax and those other taxes? The current Village budget allocates 58% to police protection – principally our police officers' salaries, health insurance, and retirement benefits, together with the cost of the patrol cars, their maintenance and fuel costs. 24% will pay for administration costs, including salaries of our part-time Village Hall staff, professional fees, and insurance. And the rest, 18%, will go for our roads - resurfacing and maintenance expenses, together with the cost of snow removal.

All this doesn't make paying your property tax bills any easier, but now perhaps you can see better where your money is going.

Looking ahead, Wayne may soon be facing the same problems as other communities. Current forecasts predict shrinking or flattening revenues but continuing growth in expenditures. Stay tuned!

Your Contributions Appreciated

The Village of Wayne has two very special events each year—**Flag Day** in June and **Wayne Day** in October. Both are unique and make us proud to live in Wayne. These events, however, require money to put them on. As money tightens within the Village's budget, you can help by donating to one or both of these events. Checks may be made to Village of Wayne, P.O. Box 532, Wayne, IL 60184.

Back to School

Please remember that school is back in session and the 20 mph speed limit in the school zone is strictly enforced.



Also, be prepared to stop for school buses loading and unloading children. A violation for passing a stopped school bus could lead to a suspension of your license.

One-Way Street Reminder

The following streets are hereby designated as one-way streets, by indicating the street, direction of travel and portion limited to one-way traffic:

Glos Street, westbound from School Street to Railroad Street.

Residents are advised to please follow traffic signs.

Open Burning Restrictions

The open burning of landscape waste shall be prohibited during the times, under the conditions and in the locations, as follows:



- On cloudy or overcast days; and
- Between the hours of eight o'clock p.m. and eight o'clock a.m.; and
- During such times that the wind is in excess of ten miles per hour; and
- Within twenty feet of any building or structure or within ten feet of any property line; or under or within ten feet of the drip line of any tree; and
- During those times when the health departments of either DuPage or Kane County have determined and announced that the weather inversion conditions exist; and
- On public roads, alleys, sidewalks or easements; and
- When the material being burned is other than dry landscape waste; and
- When a fire extinguisher or garden hose or other source of water is unavailable; and
- When the open burning is unsupervised; and
- Open burning of waste, where such waste was not generated from or by vegetation growing on the property where the open burning is taking place.

Wayne Historic Preservation Society

By Karen Armbrust

Like most Wayne residents, on any average day I go to the Post Office to pick up my mail. Depending on how I time it, I'll see Ernie Bellack coming home from his "ballet class" at the Delnor Health Center or Bill Johnston riding his bike into town or any one of the Garden Club members watering the geraniums that they planted in the Village flower containers in the spring. If I *really* time it right, I get to see Levi who invariably says I am a "good lookin' spring chicken" that makes his hair curl and his knees knock. Inside, while I buy my stamps, Janet will ask about my children. No matter how I time it, my trip to the Post Office is never short. There will always be someone there to talk to, someone whose life has touched mine.

I miss seeing Max Cohen, with his big smile and kind words. I miss seeing Arnold Bisbee, a true gentleman. I miss seeing Rook Smith, one of the most encouraging people I have ever known.

I smile when I see friends and I am saddened when I have to read Gladys Stevenson's beautiful hand written notices of the death of one of Wayne's own.

Author Wendell Berry states that we cannot know *who* we are unless we know *where* we are. His fellow author Wallace Stegner elaborates by stating that "knowing where we are comes from working in [that place] in all weathers, making a living from it, suffering from its catastrophes, loving its mornings or evenings or hot noons, valuing it for the profound investment of labor and feeling that you, your parents and grandparents, your all-but unknown ancestors have put into it".

Living in the 21st century, many of us haven't had the comfort of living in one location. Most of us are adopted sons and daughters of this special place called Wayne. But we can graft ourselves into the rich history of our community by learning more about those who came before us, those who settled here and made the Village a true "place" by working in it in all weathers. We can participate and add to that sense of place by leaving a trace of ourselves on this land and with our neighbors. Perhaps the names Dunham or Pratt or Fletcher don't appear on our family tree. We can't lay claim to Wayne ancestry. But for today, we live here in Wayne and what we do here will be part of the history that others, heirs to the legacy we leave, will look back on.

This is the philosophy behind Flag Day, Wayne Day and all the other events that bring our community together and help to establish the same type of bonds that the founding

families originally had.

This year Wayne celebrates 175 years of history. We will be celebrating the legacy of the Dunhams and the Laughlins, the Fletchers and the Petersons, but we will also be celebrating those people who are making Wayne what it is today: the Jensens with their prairie plantings, Eileen Phipps and the entire Village Board who work endlessly on Village projects, the Garden Club, the Boy Scouts, the Conservancy, the Preservation Society, the Hunt....the list is long.

October 3rd, plan to come and contribute to the celebration and making of history at Wayne Day. You might feel your roots go down just a little deeper.

Donations are always appreciated and fully deductible, the WHPS is a 501(c)3, not for profit organization.

From the Wayne Historical Preservation Society collection

Did you know?



Returning to the wisdom of Wendell Berry: "A place is not a place until it has had a poet".

Did you know....Francis Peterson made Wayne a true place!

We have our very own poet who wrote about happenings in the Village and also poems to celebrate the small things of life. These poems were gathered in a little book (in the Preservation Society's collection) titled *Down Friendship Lane, A Visit in Verse* published in 1953. Legend has it that he wrote birthday poems for his friends and neighbors, though none of these have surfaced to date.

Like his Indiana predecessor, James Whitcomb Riley, Francis wrote about simple things in simple language. How "ten cents here and ten cents there" and your dollar is soon spent, how young boys seem immature now but will soon be the leaders of our country and how it feels to be hoeing in the garden. He celebrated the country doctor, the telephone operator, the family washtub and his mother's coffee mill, he even wrote a tribute to his dog.

In a time when life seems very uncertain, it is reassuring to know that everything is different yet nothing has changed.

Wayne Area Conservancy Foundation and Equestrian News

By Kathie Connolly



Blessing of the Hounds and Opening Meet

The Wayne-DuPage Hunt begins another season with the Blessing of the Hounds on Sunday, October 4th. All Wayne residents are invited to attend the event. The hunt will assemble at Dunham Woods at 10AM, then horses, hounds and car caravan will move down to arrive at the front of the church around 10:30AM. A short traditional blessing of hounds, horses and riders will be led by Reverend Ron Purser accompanied by the Little Home Church choir and all in attendance. This is a bit of unique Wayne Americana that every Wayne-ite should experience!

Our “foxes” are two members who go out ahead of the hounds and lay the scent of a fox for the hounds to “chase”. Please be alert to horses and hounds this fall as you drive through the village – our beloved animals are not always as aware of traffic as we might wish!

Calendar of Equestrian Events

September 5-7, *75th Dunham Woods Horse Show*

September 12, *WACF Countryside Care*

September 9-13, *Bit of Britain/USEA American Eventing Championship*

October 4, *Wayne-DuPage Hunt Opening Meet “Blessing of the Hounds”*

October 10, *WACF Countryside Care*

November 14, *WACF Countryside Care*

Wayne Park Commission News



Thank you to all our wonderful volunteers who have given of their valuable time on the second Saturday of each month to help the Wayne Area Conservancy Foundation with countryside care, mowing, maintaining the trails, and other chores. You all are a vital part of our close-knit, caring community.

Tips for Living Green

Some of the items we use in our everyday lives currently have a limited recommended life span.

PILLOWS have a life span stated by their manufacturer for use as a pillow to sleep on. Many of these pillows which have reached the end of their life as a bed pillow end up in a land fill. We should consider re-using our pillows for other purposes:

- Use the stuffing (after it is washed) to make a soft pillow more firm
- Can the stuffing be added to your dog’s bed?
- Check with your local animal shelter to see if they could use them
- Use the pillows for packing material when you move
- Use as stuffing material in toys
- Use to make throw cushions

TOOTHBRUSHES have a recommended life span of use on your teeth. Many hundreds end up in a land fill also. Some manufacturers are making brushes out of material that can be recycled or in some cases the handles can be recycled.

We can re-use our toothbrushes for other purposes:

- Scrubbing tile grout
- As a paint brush for children
- For cleaning a cheese grater
- For cleaning carpet and upholstery
- For cleaning jewelry
- For cleaning shoe bottoms
- For cleaning battery terminals

CHECK OUT VILLAGE OF WAYNE'S WEB- SITE

www.villageofwayne.org

Our website is a useful informational tool for all to enjoy. It contains governmental contact information, history, culture, photos, meeting agendas, our zoning map and Wayne news.

WAYNE



POLICE

BULLETIN

Safeguard Your Home From a Burglary

As a national average, July is the month with the highest number of reported burglaries. The reasons behind this statistic include: unoccupied homes while families vacation; fully-bloomed landscaping providing natural cover for criminal activity; and reduced home security to take advantage of the height of the summer season. A majority of residential burglaries occur during the day and with no forced entry.

The Village of Wayne Police Department would like to provide Village residents with the following crime prevention suggestions to deter the possibility of a residential burglary:

1. Keep all doors closed and locked, even when you are at home. Although not as secure, when you are naturally ventilating your home with open entry doors, a locked storm door provides some measure of deterrence. Always lock your doors if you are leaving your home or going to sleep.
2. Similar guidelines apply to windows. Do not leave windows open when you are away. Be sensible about which windows you leave open overnight for ventilation. Use window locks.
3. Secure sliding glass doors. Place a metal rod or piece of hardwood in the track and install vertical bolts. These will help prevent burglars from forcing the door open or lifting it off the track.
4. Lock the door to an attached garage. Do not rely on your automatic garage door opener for security.
5. Make your residence appear occupied, even when no one is home. Use timers on lights, radios and TVs. Window treatments should be maintained with a normal, everyday appearance.
6. Consider decorative outdoor lighting. It is a cost-effective way to discourage intruders.
7. Have a trusted neighbor collect mail and newspapers while you are away, so delivered items do not accumulate. You can also ask a neighbor to park in your driveway to make it appear that you are present.
8. The Village of Wayne Police Department provides a free Vacation Watch service to discretely check on your home while you are away.
9. Keep shrubbery trimmed away from entrances and walkways. While large, ornate hedges may be beautiful, they also provide a hiding place for burglars.
10. Wayne is a caring and community-oriented Village. If you hear or see something suspicious or just out of the ordinary, please do not hesitate to call 911.

For more crime prevention information, including a Vacation Watch request, please contact the Wayne Police Department at (630) 584-3031.

Wayne Countryside Garden Club 2009 Programs

Sept 17 Niche Restaurant Luncheon and Organic Market Tour
Jeremy Lycan
9:30 a.m.
14 So. 3rd St., Geneva, IL

November 19 Bow Making for Swags
Val Star- 33W349 Woodmere Lane,
Wayne
Meet at Val's @ 9:30 a.m.

October 3 Fall Civic Cleanup
9:00 a.m. at the Old Town Hall

December 3 Traditional "Holly Hanging"
Festivities
Swag Making Day & Potluck Luncheon
Little Home Church @ 9:00 a.m.

October 23 Pumpkin Patch
At Wayne Elementary School
8:00 a.m.
Chairman: Bobbi Higham & Barbara
Lepke

Dec 4 & 5 Holiday Plant Sale Pickup Day
Little Home Church
Dec 4- 12:00 noon - 6:00 p.m.
Dec 5- 10:00 a.m. - 12:00 noon
Chairman: Bobbi Higham, Barb Lepke

October 24 Tag Day

Wayne Countryside Garden Club Needs Your Help

The 2009 Wayne Countryside Garden Club Garden Walk was an exciting, fun filled event. This was our main fund raiser of the year. Five diverse gardens were on display for the public's viewing pleasure. Not only was the public impressed by the gardens, but also our beautiful Wayne countryside. How lucky we are to live in such a great community. However, likely due to the slow economy, we did not have as many visitors as in 2007, which leads me to a request from the Garden Club. Swags at Christmas on Wayne streets are paid for solely by the Garden Club and your generous donations. Tag Day at the post office has been another fund raiser. However, many homes in Wayne now have postal delivery which cuts down our donations on Tag Day considerably. The economy, of course, also plays a factor. The Garden Club has recently landscaped the Old Town Hall, and there is more to be done, plus maintaining the landscaping. If only we could grow a money tree! We really would appreciate any donations you may be able to give, so we can keep our wonderful tradition of Christmas Swags on your streets alive. We thank you for your help!

I enjoy the swags at Christmastime and want to see this tradition continue on my street and throughout Wayne.

I wish to donate \$_____.

Please mail to: The Wayne Countryside Garden Club
PO Box 822
Wayne, IL 60184

Wayne Window

~ A newsletter of the President and Board of Trustees of the Village of Wayne ~

Wayne Village Hall

5N430 Railroad St., PO Box 532
Wayne, IL 60184
630-584-3090 phone
630-584-0259 fax
www.villageofwayne.org

Hours:

Monday-Friday, 8am-12pm

President: Eileen Phipps
Village Treasurer: Bill Sheehan
Village Clerk: Patti Engstrom
Deputy Clerk: Laura Shepard
Director of Acctg: Nancy Harris

Trustees:

Pete Connolly, Ed Hull, Bill Jensen,
Howard Levine, Rob Reed,
Ann Tigges

Wayne Building and Zoning Department

5N430 Railroad St
Wayne IL, 60184
630-584-7760 phone
630-584-0259 fax

Director: Mike Gricus
Secretary: Gay Stroede

Hours:

Monday-Friday, 8am-12pm

Wayne Police Department - Dan Callahan, Chief

5N430 Railroad St
Wayne, IL 60184
630-584-3031 non-emergency
630-584-7603 fax

Emergencies: 9-1-1

Lobby Hours:

Monday-Friday, 8am-2pm

**Emergency calls from outside
the Village of Wayne:
630-232-8400**

The Village of Wayne
P.O. Box 532
Wayne, IL 60184

PRESORTED
STANDARD
U.S. POSTAGE PAID
WAYNE, IL
PERMIT NO. 2

POSTAL PATRON
WAYNE, ILLINOIS 60184